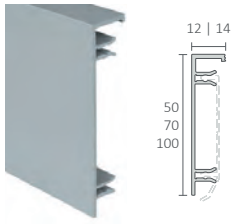


RODAPÉS | SKIRTING BOARDS | PLINTHES

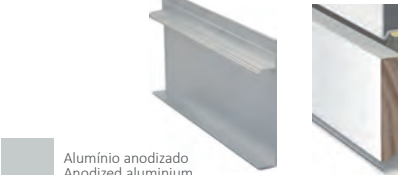
Alumínio | Aluminium



Canto exterior
Outside corner
Coin extérieur



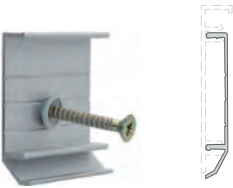
Rodapé de embutir | Wall flush skirting | Plinthe invisible



Alumínio anodizado
Anodized aluminium

50 x 12 | 70 x 14 | 100 x 14
Comprimento | Length
Longueur: 2500mm

Clip de rodapé de alumínio
Skirting board clip | Plinthe clip



Canto interior
Inside corner
Coin intérieur

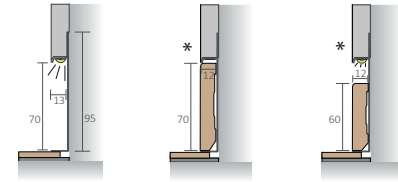


Topo
Top
Haut



Alumínio anodizado
Anodized aluminium

Tipos de aplicação | Applications types | Types d'applications



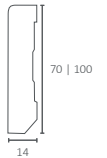
- **Embutido simples com ou sem led.**
- Simple wall flush skirting with or without led.
- Simple plinthe invisible avec or sans led.
- **Aplicação com rodapé madeira sem led.**
- Installation with wooden skirting board without led.
- Application avec plinthe de bois sans led.
- **Aplicação com rodapé madeira com led.**
- Installation with wooden skirting board and led.
- Application avec plinthe de bois et led.

- * **Rodapé de madeira sob encomenda (disponível apenas em lacado branco).**
* Wooden skirting board made by order (only available in white lacquered).
- * **Plinthe en bois sur demande (seulement disponible en blanc laqué).**

Fita led não incluída. Led strip not included. Bande led non inclus.

Comprimento | Length | Longueur: 2500mm

Madeira | Wood | Bois



(PT) A gama de rodapés com base em pinho americano é produzida com os mesmos padrões e cores do pavimento PRIME CLICK, possibilitando assim a consonância estética perfeita. São duráveis e requerem pouca manutenção.

(EN) The skirting boards range in pine core is produced with the same patterns and colors of the PRIME CLICK flooring, enabling the perfect aesthetic harmony. They are durable with low maintenance requirements.

(FR) La gamme de plinthes à base de pin Il est fabriqué selon les mêmes normes et couleurs du parquet PRIME CLICK, en permettant ainsi l'harmonie esthétique parfaite. Ils sont durables et avec faibles exigences de maintenance.

Comprimento | Length | Longueur: 2300 | 2500 mm

Cores | Colors

	Alaska Oak		Nordic Oak
	Fox Oak		Antracite Oak
	Sand Oak		Golden Oak
	Blond Oak		Tobacco Oak
	Country Oak		Nogueira Walnut Noyer
	Prata II Silver II Argent II		Alumínio Aluminium Aluminium
	Branco White Blanc		

- * Apenas Rodapés | Only for skirtings | Seulement aux plinthes
- ** Apenas Perfis de remate | Only for profiles | Seulement aux profils

(PT) Os perfis de remate em alumínio foram desenvolvidos para possibilitar uma transição perfeita entre as juntas no pavimento. Proporcionam um encaixe perfeito e um resultado final esteticamente atrativo. Acabamento em alumínio ou revestimento com lâminas decorativas nas cores e padrões da gama PRIME CLICK.

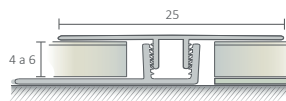
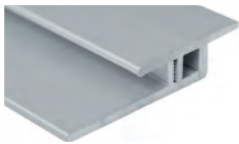
(EN) The aluminum finishing profiles have been developed to enable a seamless transition between the joints of the flooring. They provide a perfect fit and a very attractive aesthetic result. In anodized aluminium finish or coated in the same decors and patterns of the PRIME CLICK range.

(FR) Les profils de finition de l'aluminium ont été développés pour permettre une transition parfaite entre les joints du parquet. L'ajustement parfait permet un résultat final esthétiquement attrayant. Finition en aluminium ou en revêtement avec des couleurs et des motifs de PRIME CLICK.

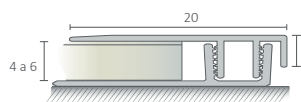
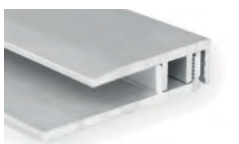
Comprimento | Length | Longueur: 2500mm

PERFIS DE REMATE LVT | LVT PROFILES | PROFILS LVT

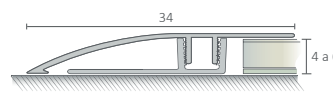
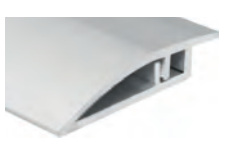
Perfil de transição | Transition profile | Profil de transition (25 mm)



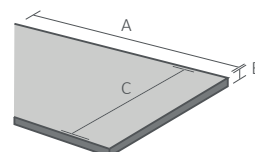
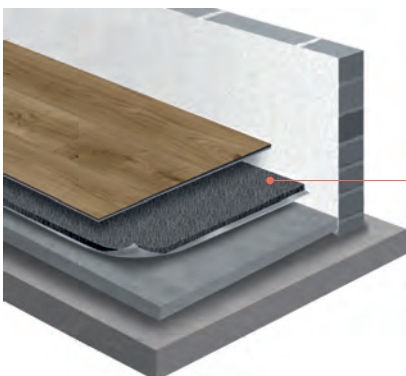
Perfil terminal | End profile | Profil de finition (20 mm)



Perfil Desnível | Reducer profile | Profil d'écart (34 mm)



TELA DE ISOLAMENTO | ISOLATION SCREEN | ÉCRAN D'ISOLATION



A Comprimento | Length | Longueur

10 m

B Espessura | Thickness | Épaisseur

1,5 mm

C Largura | Width | Largeur

1 m



Densidade
Density
Densité
950 kg/m3



Proteção contra a humidade
Moisture Protection
Protection contre l'humidité



Redução do ruído ao caminhar
Drum Sound Reduction
Réduction du bruit de choc
35%



Resistência Térmica
Thermal Resistance
Résistance Thermique
0,041 m2K/W



Isolamento ao ruído de impacto
Impact Noise Insulation
Isolation du bruit d'Impact
18 db



Resistência ao Fogo
Fire Class
Classement au Feu
Bfl-S1